

\$545,000 - 1702, 817 15 Avenue Sw, Calgary

MLS® #A2263902

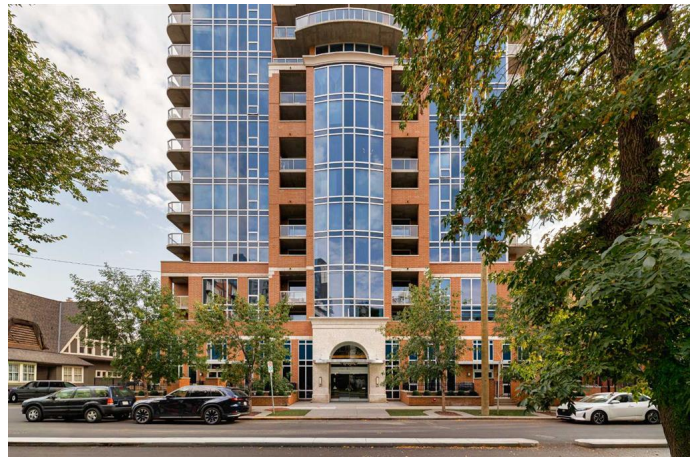
\$545,000

2 Bedroom, 2.00 Bathroom, 897 sqft

Residential on 0.00 Acres

Beltline, Calgary, Alberta

AMAZING CITY + MOUNTAIN VIEWS | 2 BED - 2 BATH | HIGH FLOOR 02â€™™ UNIT | HEATED UNDERGROUND PARKING | CONCIERGE | GYM â€“Welcome to Unit 1702 @ The Montana â€” an A+ executive condo building in the heart of Calgaryâ€™™s vibrant Beltline. This coveted 02â€™™ floor plan corner unit on a high floor is arguably the best 2 bed, 2 bath layout in the building, perfectly positioned on a high floor to showcase breathtaking panoramic views of downtown and the mountains. Enjoy stunning sunrises, sunsets, and dramatic storm-watching from the comfort of your living room â€” there's always something to admire. The smart, split-bedroom design ensures privacy, with spacious bedrooms flanking an open-concept living space. Tasteful upgrades include wide plank light vinyl flooring and a fresh, modern paint palette that elevates the home's urban elegance. The unit also features in-suite laundry, a heated underground parking stall, and a separate storage locker. The Montana is a Manhattan-inspired landmark featuring full concierge service, a gym (currently being renovated), and exceptional proximity to downtown offices, shopping, restaurants, and the energy of 17th Ave. Whether you're working from home or heading out for the evening, this location offers the ultimate inner-city lifestyle with all the convenience and style of upscale living. Donâ€™™t miss your chance to own a piece of the Calgary skyline.



Built in 2009

Essential Information

MLS® #	A2263902
Price	\$545,000
Bedrooms	2
Bathrooms	2.00
Full Baths	2
Square Footage	897
Acres	0.00
Year Built	2009
Type	Residential
Sub-Type	Apartment
Style	Single Level Unit
Status	Active

Community Information

Address	1702, 817 15 Avenue Sw
Community	Beltline
Condo	Z-name Not Listed
City	Calgary
County	Calgary
Province	Alberta
Postal Code	T2R 0H8

Amenities

Amenities	Bicycle Storage, Elevator(s), Fitness Center, Storage, Visitor Parking, Garbage Chute
Parking Spaces	1
Parking	Stall, Titled, Underground
# of Garages	1

Interior

Interior Features	Breakfast Bar, Granite Counters, High Ceilings, Open Floorplan
Appliances	Dishwasher, Dryer, Electric Stove, Range Hood, Refrigerator, Washer, Window Coverings
Heating	Fan Coil, Natural Gas
Cooling	Central Air
# of Stories	28

Exterior

Exterior Features	Balcony
Construction	Brick, Concrete

1702, 817 15 AVENUE SW
RECA MEASUREMENT STANDARD Calgary, AB
MAIN LEVEL (AG) - 896.82 Sq.Ft. / 83.31 m²
TOTAL ABOVE GRADE RMS SIZE - 896.82 Sq.Ft. / 83.31 m²

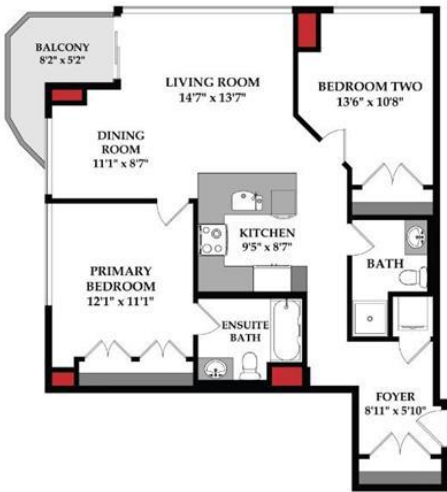


Additional Information

Date Listed	October 14th, 2025
Days on Market	1
Zoning	DC (pre 1P2007)

Listing Details

Listing Office	RE/MAX House of Real Estate
----------------	-----------------------------



Data is supplied by Pillar 9â„¢ MLSÂ® System. Pillar 9â„¢ is the owner of the copyright in its MLSÂ® System. Data is deemed reliable but is not guaranteed accurate by Pillar 9â„¢. The trademarks MLSÂ®, Multiple Listing ServiceÂ® and the associated logos are owned by The Canadian Real Estate Association (CREA) and identify the quality of services provided by real estate professionals who are members of CREA. Used under license.