

# \$724,900 - 2509 Sovereign Crescent Sw, Calgary

MLS® #A2263435

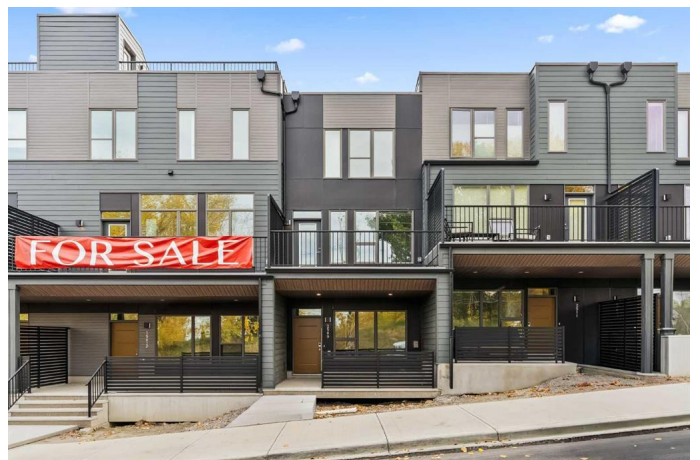
**\$724,900**

2 Bedroom, 3.00 Bathroom, 1,502 sqft

Residential on 0.00 Acres

Shaganappi, Calgary, Alberta

Welcome to The Alameda by Brookfield Residential - where modern design meets urban convenience, just minutes from downtown Calgary with stunning views! This beautiful 2-bedroom, 2.5-bathroom townhome offers over 1,400 sq. ft. of thoughtfully designed living space, complete with a single attached garage and a spacious main-level flex room - perfect for a home office, gym, or creative studio + 3 outdoor living spaces including a rooftop patio! The lower level features an expansive flex room spanning ~14'x14' with soaring 10' ceilings and a wall of windows overlooking your private patio and the front street. Experience open-concept living on the main level highlighted by 9' ceilings throughout with oversized triple-pane windows at either end providing endless natural light all year long. The kitchen is a chef's dream, featuring KitchenAid gourmet appliances, including a gas cooktop, wall oven/microwave, and a chimney hood fan, all complemented by elegant finishes and generous counter space and a pantry. The kitchen is central to the main level, opening to both the dining area and great room, creating the ideal space for entertaining. The great room has direct access to the main level balcony that spans 15' x 9'8" and includes a BBQ gas line for everyday convenience. The upper level features a large primary suite complete with walk-in closet and a private 4pc ensuite with dual sinks and a tiled walk-in shower. A large second bedroom,



full bathroom and laundry complete the upper level. The top level of the home is where you'll spend your summers - soaking up the sun on your private ~200 ft2 rooftop patio with views overlooking the Shaganappi golf course! Complete with 2 living areas, 2 bedrooms, 2.5 bathrooms and 3 outdoor living spaces + a private attached garage, this home is perfect for professionals or down-sizers that appreciate convenience. Located away from Bow Trail, this premium location offers a quiet space for daily living with convenient access to the CTrain and downtown Calgary just minutes away. Additional features include A/C rough-in, convenient street parking in front, and full builder warranty + Alberta New Home Warranty - allowing you to purchase with peace of mind. This maintenance-free home is fully move-in ready in desirable Crown Park!

Built in 2025

**Essential Information**

MLS® #	A2263435
Price	\$724,900
Bedrooms	2
Bathrooms	3.00
Full Baths	2
Half Baths	1
Square Footage	1,502
Acres	0.00
Year Built	2025
Type	Residential
Sub-Type	Row/Townhouse
Style	3 Storey
Status	Active

**Community Information**

Address	2509 Sovereign Crescent Sw
Community	Shaganappi

Condo	Z-name Not Listed
City	Calgary
County	Calgary
Province	Alberta
Postal Code	T3C 3Y3

## Amenities

Amenities	Visitor Parking
Parking Spaces	1
Parking	Single Garage Attached
# of Garages	1

## Interior

Interior Features	Double Vanity, High Ceilings, Kitchen Island, No Animal Home, No Smoking Home, Open Floorplan, Pantry, Quartz Counters, Vinyl Windows, Walk-In Closet(s)
Appliances	Dishwasher, Dryer, Gas Cooktop, Microwave, Oven-Built-In, Range Hood, Refrigerator, Washer
Heating	Forced Air
Cooling	Rough-In
Basement	None

## Exterior

Exterior Features	Balcony, BBQ gas line, Private Entrance
Lot Description	Back Lane, Interior Lot
Roof	Asphalt Shingle
Construction	Wood Frame
Foundation	Poured Concrete

## Additional Information

Date Listed	October 9th, 2025
Days on Market	2
Zoning	DC

## Listing Details

Listing Office	Charles
----------------	---------

Data is supplied by Pillar 9â„¢ MLS® System. Pillar 9â„¢ is the owner of the copyright in its MLS® System. Data is deemed reliable but is not guaranteed accurate by Pillar 9â„¢. The trademarks MLS®, Multiple Listing Service® and the associated logos are owned by The Canadian Real Estate Association (CREA) and identify the quality of services provided by real estate professionals who are members of CREA. Used under license.